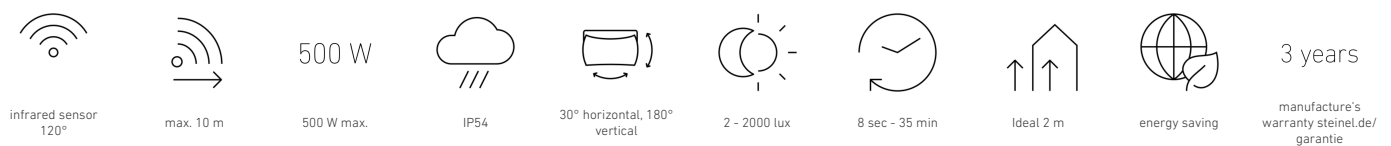
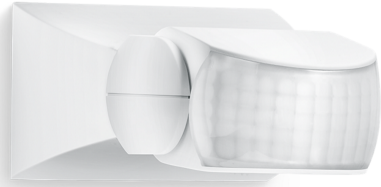


## Motion detector

# IS 1

white  
EAN 4007841 600310  
Article number 600310



### Function description

Targeted detection and attractive price. Infrared motion detector IS 1, for indoors and out, ideal for targeted coverage of small areas, 120° angle of coverage, reach up to 10 m, selectable time and twilight threshold, sensor turns through 30° and tilts through 180° for exact adjustment of the detection zone.

### Technical specifications

Dimensions (L x W x H)	120 x 80 x 50 mm	LED lamps > 2 W < 8 W	125 W
Manufacturer's Warranty	3 years	LED lamps > 8 W	250 W
Settings via	Potentiometers	Capacitive load in $\mu\text{F}$	88 $\mu\text{F}$
With remote control	No	Technology, sensors	passive infrared, Light sensor
Version	white	Mounting height	1,80 – 3,00 m
PU1, EAN	4007841600310	Mounting height max.	3,00 m
Type	Motion detectors	Optimum mounting height	2 m
Application, place	Indoors, Outdoors	Detection angle	120 °
Application, room	outdoors, front door, all round the building, terrace / balcony, courtyard & driveway	Angle of aperture	40 °
Colour	white	Sneak-by guard	No
Colour, RAL	9001	Capability of masking out individual segments	Yes
Includes corner wall mount	No	Electronic scalability	No
Installation site	wall, ceiling	Mechanical scalability	No
Installation	Surface wiring, Wall, Ceiling	Reach, radial	r = 3 m (9 m <sup>2</sup> )
IP-rating	IP54	Reach, tangential	r = 10 m (105 m <sup>2</sup> )
Protection class	II	Switching zones	260 switching zones

<https://www.steinel.de>

Subject to technical modifications

05.2025 Page 1 from 3

# IS 1

white  
 EAN 4007841 600310  
 Article number 600310



## Technical specifications

Ambient temperature	from -20 up to 50 °C
Material	Plastic
Mains power supply	230 – 240 V / 50 Hz
Switching output 1, resistive	500 W
Fluorescent lamps, electronic ballast	250 W
Fluorescent lamps, uncorrected	500 VA
Fluorescent lamps, series-corrected	500 VA
Fluorescent lamps, parallel-corrected	500 VA
Switching output 1, low-voltage halogen lamps	500 VA
LED lamps < 2 W	100 W

Twilight setting	2 – 2000 lx
Time setting	8 s – 35 Min.
Basic light level function	No
Main light adjustable	No
Twilight setting TEACH	No
Constant-lighting control	No
Interconnection	Yes
Type of interconnection	Master/master
Interconnection via	Cable
Product category	Motion detector

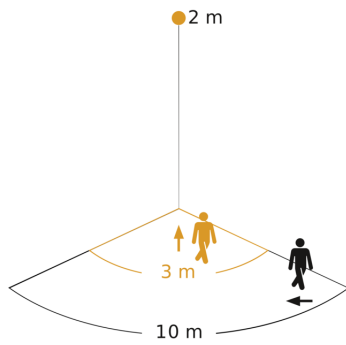
Motion detector

# IS 1

white  
EAN 4007841 600310  
Article number 600310

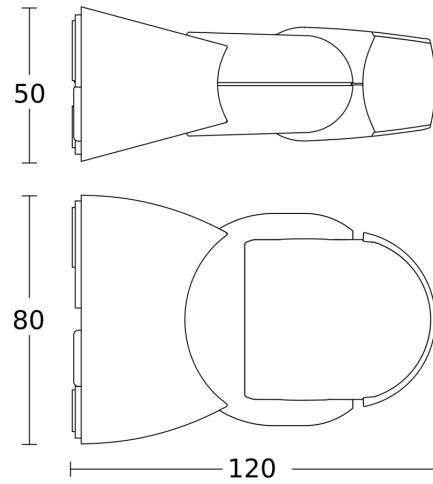


### Detection Zone

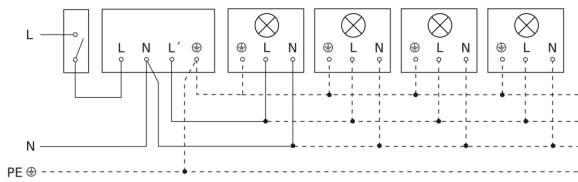


Possible mounting height: 1,80 m - 3,00 m  
Orange: radial  
Black: tangential

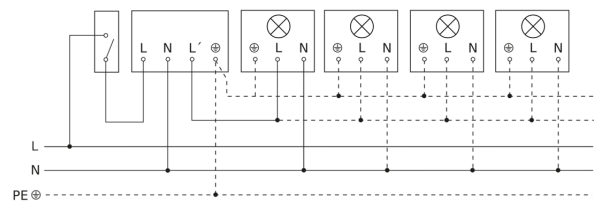
### Dimension Drawing



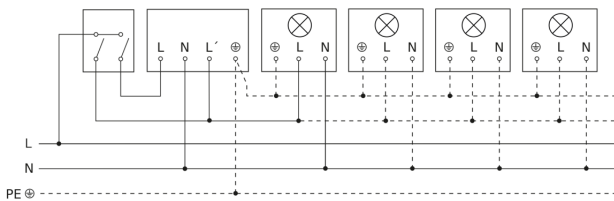
### Light without neutral conductor



### Light with neutral conductor



### Connection using two-circuit switch for manual and automatic operation



### Connection of 4-fold push-button coupler to DALI2 APC

